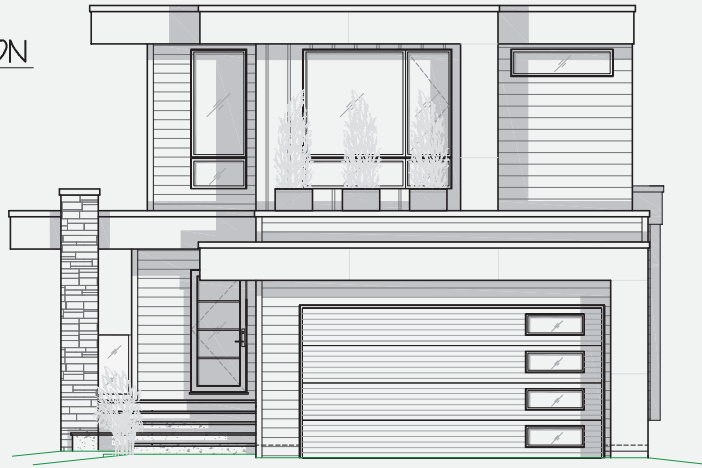


FRONT ELEVATION



# THE IYLA

2 STOREY

1605 FT<sup>2</sup>

3  2.5 

## FEATURES:

- OPEN CONCEPT MAIN FLOOR
- LARGE WALK-IN PANTRY
- GAS FIREPLACE IN GREAT ROOM
- LARGE REAR DECK-PARTIALLY COVERED
- MAIN FLOOR LAUNDRY/ MUD ROOM
- OVERSIZED MASTER ENSUITE WITH DOUBLE SIZED SHOWER

## NOTES:

• _____	• _____
• _____	• _____
• _____	• _____
• _____	• _____
• _____	• _____
• _____	• _____
• _____	• _____
• _____	• _____
• _____	• _____
• _____	• _____
• _____	• _____

HOME RATING: /10

Drawings may vary depending on the lot, design, elevation, area architectural controls and Alberta Building Code. Dimensions are approximate and subject to change. Floor plans and illustrated features are an artistic conception and may be optional. Van Arbor Homes reserve the right to alter or change plans and specifications without notice.



# THE IYLA

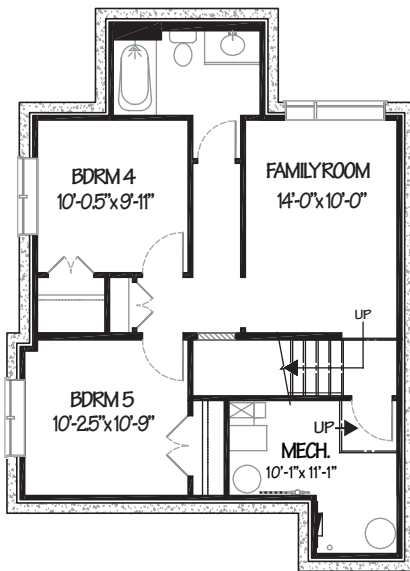
*lifestyle*

**2 STOREY**

**1605** FT<sup>2</sup>

**3** **2.5**

**LOWER LEVEL 575 FT<sup>2</sup>**  
*\*OPTIONAL BASEMENT DEVELOPMENT*



**MAIN LEVEL 815 FT<sup>2</sup>**



**UPPER LEVEL 790 FT<sup>2</sup>**

