

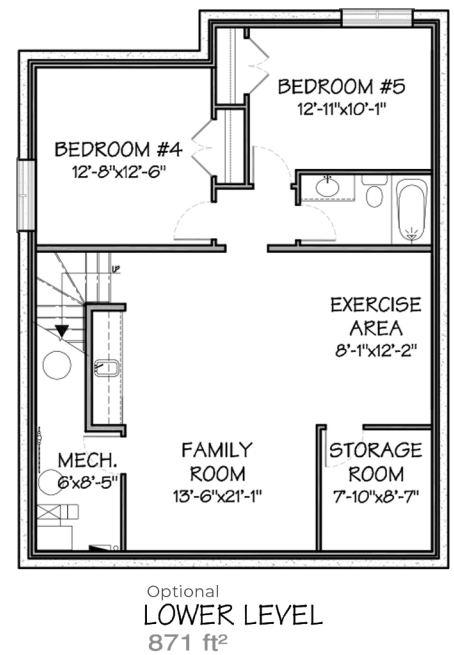
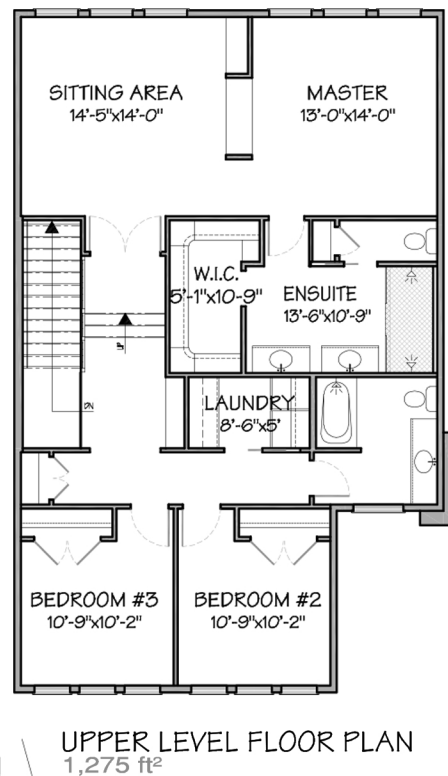
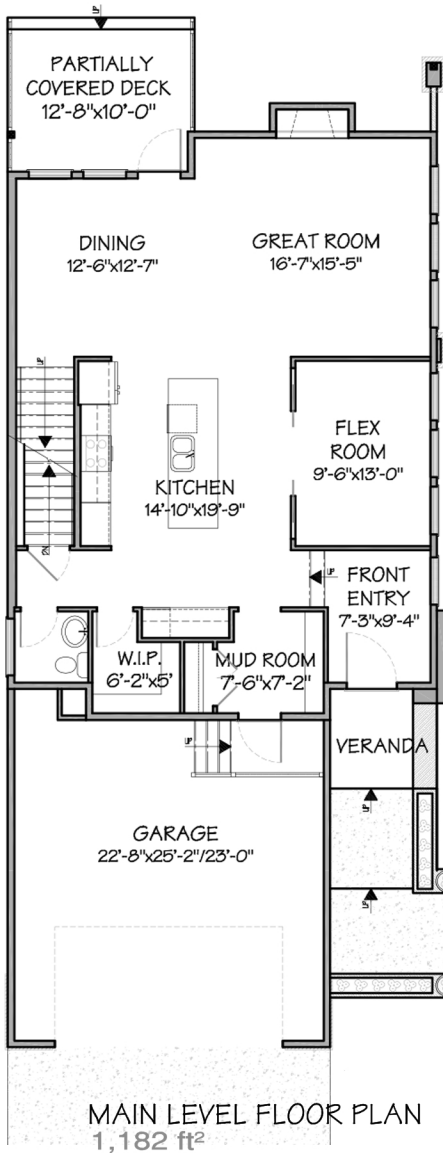
# The Noël Dawn

inspiration

2-STOREY

2457 SF

3  2.5 



**STARS**<sup>®</sup>  
2022 LOTTERY HOME



# THE NOEL DAWN 2 STOREY

**STARS**®

2022 LOTTERY HOME

2457 SF 3 2.5

**Come home to Noel Dawn, a prairie-style two-story designed for modern family living. Contemporary features meet classic design to support a life at home that embodies luxury in every detail. Floor-to-ceiling windows and wide-open spaces create a bright and spacious home. The gallery feel front entrance, as well as the smartly-designed kitchen complete with coffee bar, create a space perfect for entertaining and day-to-day family life. The primary suite boasts a 2 sided fireplace and private sitting area and will become your own personal oasis in the heart of your home. Noel Dawn is where family life lives in luxury. Make yourself at home.**



**Val & Mike Lowen**  
OWNERS OF VAN ARBOR HOMES

*Van Arbor Homes is honoured to be building the **STARS Lottery Home**, supporting the STARS cause, and the life-saving services they provide for Albertans.*

After 19 years of homebuilding it is still our passion to provide quality product to our clients. We strive to create unique experiences inspired by creativity and innovation.



**STARS**®  
LOTTERY



403.394.5544

val.lowen@vanarborhomes.com

**VANARBORHOMES.COM**

Drawings may vary depending on the lot, design, elevation, area architectural controls and Alberta Building Code. Dimensions are approximate and subject to change. Floor plans and illustrated features are an artistic conception and may be optional. Van Arbor Homes reserve the right to alter or change plans and specifications without notice.